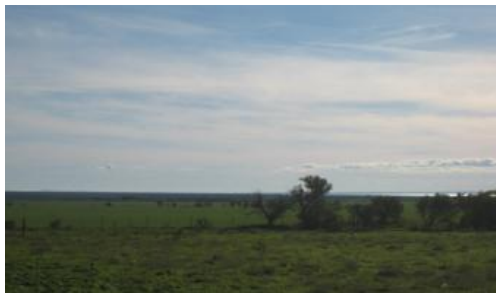
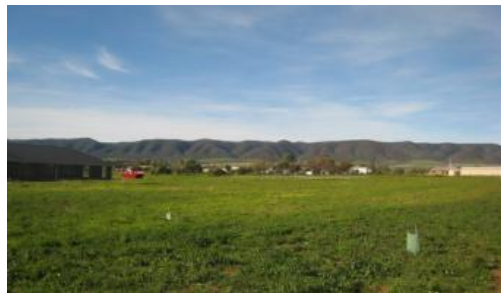


Sold



Lot 971 Scenic Drive, Napperby



Simply Stunning Views!

A prime building allotment with a great country feel. This affordable allotment is 1.014 hectares (approx 2.2 acres) and has magnificent views. Brand new homes are currently being completed on the adjoining allotments - evidence of high demand! Water meter connected, electricity available. Be quick to enquire!

RLA 172 571

The above information provided has been furnished to us by the vendor/s. We have not verified whether or not that information is accurate and do not have any belief in one way or the other in its accuracy. We do not accept any responsibility to any person for its accuracy and do no more than pass it on. All interested parties should make and rely upon their own inquiries in order to determine whether or not this information is in fact accurate.

10,140 m²

Price	SOLD
Property Type	Residential
Property ID	498
Land Area	10,140 m ²

Agent Details

Brodie Lavis - 0417 826 016

Kane Lavis - 0408 461 492

Office Details

Port Pirie

162 Ellen Street Port Pirie SA 5540

Australia

08 86321511

