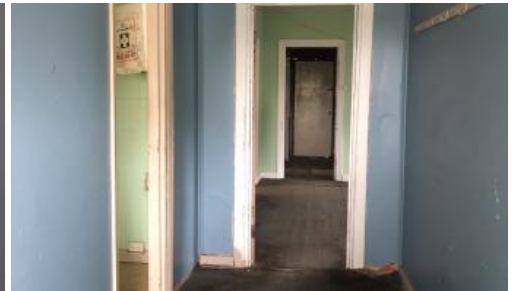




**22 Pavlich Street, Port Pirie**



## ATTENTION RENOVATORS

This timber framed home consists of 3 Double Bedrooms, A spacious lounge, kitchen with old wood stove, separate dining and a bathroom with shower and toilet. The allotment size is approx 478 Square metres and includes a shared driveway. Renovate or Detonate.

\* Following current Covid-19 guidelines and government regulations, we are only conducting private inspections by appointment only. Please contact the sales agent to make an appointment to inspect this property \*

RLA 172 571

*The above information provided has been furnished to us by the vendor/s. We have not verified whether or not that information is accurate and do not have any belief in one way or the other in its accuracy. We do not accept any responsibility to any person for its accuracy and do no more than pass it on. All interested parties should make and rely upon their own inquiries in order to determine whether or not this information is in fact accurate.*

3 1 1 478 m2

<b>Price</b>	SOLD
<b>Property Type</b>	Residential
<b>Property ID</b>	3052
<b>Land Area</b>	478 m2

### Agent Details

Brodie Lavis - 0417 826 016

Kane Lavis - 0408 461 492

### Office Details

Port Pirie  
162 Ellen Street Port Pirie SA 5540  
Australia  
08 86321511

