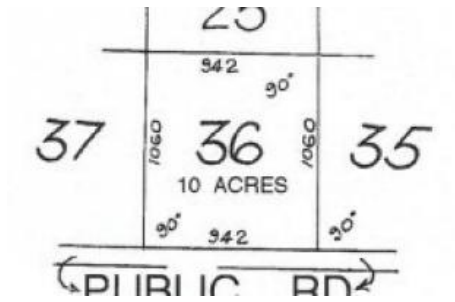


Section 36 Moppett Road, Port Pirie



Huge Allotment on 10 Acres

This parcel of land is Zoned Community Facilities and has development possibilities (subject to council consents and re-zoning).

No services are currently available.

* Following current Covid-19 guidelines and government regulations, we are only conducting private inspections by appointment only. Please contact the sales agent to make an appointment to inspect this property *

RLA 172 571

The above information provided has been furnished to us by the vendor/s. We have not verified whether or not that information is accurate and do not have any belief in one way or the other in its accuracy. We do not accept any responsibility to any person for its accuracy and do no more than pass it on. All interested parties should make and rely upon their own inquiries in order to determine whether or not this information is in fact accurate.

10.00 ac

Price	SOLD
Property Type	Residential
Property ID	2904
Land Area	10.00 ac

Agent Details

Brodie Lavis - 0417 826 016

Office Details

Port Pirie
162 Ellen Street Port Pirie SA 5540
Australia
08 86321511

