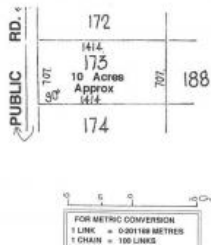




173 Harris Road, Port Pirie



Approx. 10 acres of Bulk Handling Land.

This huge allotment with old grain storage sheds has an extensive road frontage and endless possibilities.

Frontage: approx. 143m

Depth: approx. 285m

Council: Port Pirie Regional Council

Zone: Bulk Handling

Council Rates: \$3514.65 per year For further information please call Brodie Lavis on 0417826016.

* Following current Covid-19 guidelines and government regulations, we are only conducting private inspections by appointment only. Please contact the sales agent to make an appointment to inspect this property *

RLA 172 571

The above information provided has been furnished to us by the vendor/s. We have not verified whether or not that information is accurate and do not have any belief in one way or the other in its accuracy. We do not accept any responsibility to any person for its accuracy and do no more than pass it on. All interested parties should make and rely upon their own inquiries in order to determine whether or not this information is in fact accurate.

10.00 ac

Price	SOLD
Property Type	Commercial
Property ID	2727
Land Area	10.00 ac
Warehouse Area	1 m2

Agent Details

Brodie Lavis - 0417 826 016
Kane Lavis - 0408 461 492

Office Details

Port Pirie
162 Ellen Street Port Pirie SA 5540
Australia
08 86321511



