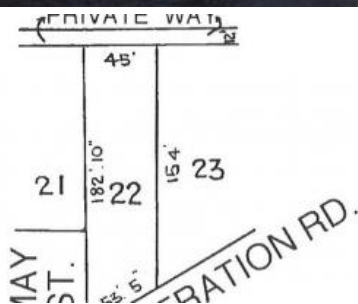


Sold



26 Federation Road, Port Pirie



All Services Available

A convenient allotment over 700 square metres with all services available. The allotment is partly fenced and has a handy rear lane access. The frontage is approx. 16 metres and could be perfect for a transport home providing Council Consent.

RLA 172 571

The above information provided has been furnished to us by the vendor/s. We have not verified whether or not that information is accurate and do not have any belief in one way or the other in its accuracy. We do not accept any responsibility to any person for its accuracy and do no more than pass it on. All interested parties should make and rely upon their own inquiries in order to determine whether or not this information is in fact accurate.

700 m2

Price	SOLD
Property Type	Residential
Property ID	1708
Land Area	700 m2

Agent Details

Kane Lavis - 0408 461 492
Brodie Lavis - 0417 826 016

Office Details

Port Pirie
162 Ellen Street Port Pirie SA 5540
Australia
08 86321511

